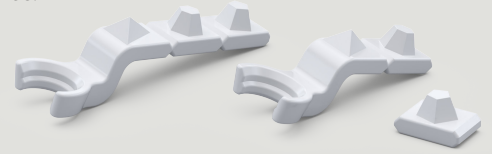


Neoss ScanKey, the key for making intraoral scanning easy

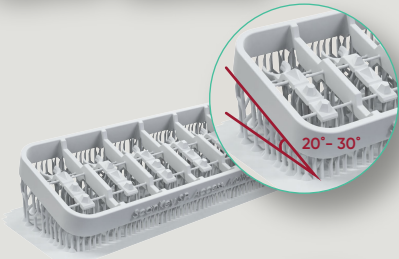
- ✓ **Optimized Workflow & Cost-Effectiveness:** ScanKey ensures a streamlined, cost-efficient digital workflow, eliminating the need for additional products while maintaining high performance.
- ✓ **Precision & Versatility:** Engineered for enhanced accuracy in stitching, ScanKey provides an optimal restoration fit and offers six customizable configurations to suit diverse clinical needs.
- ✓ **Customization & Free Solution:** ScanKey's adjustable length allows for tailored treatment planning, with a free self-printing solution available for download to reduce cost.



1.

Use opaque printing resin materials to facilitate accurate data acquisition for your iOS. ScanKeys have been validated for the following material: **SprintRay Study Model White 2**.

NOTE: Transparent resin materials are not recommended, as well as filament 3D printers, as the iOS may not be able to properly detect them.



2.

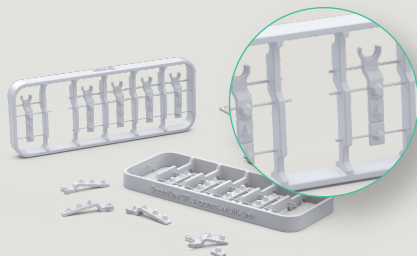
It is recommended to tilt the 3D model by 20-30 degrees during the printing setup and to add fine supports to securely hold the structure in place during printing.



3.

After printing, the ScanKey should be immersed in a 99% Isopropanol Alcohol bath for approximately 2 minutes. Following this, it is recommended to allow a 10-minute drying period, followed by a 30-minute hardening process.

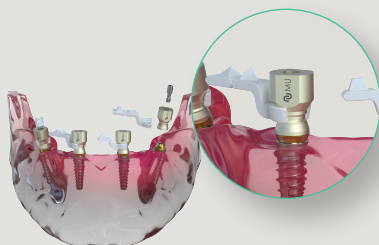
NOTE: For optimal cleaning results, the use of an ultrasonic cleaning machine with 99% Isopropanol Alcohol is recommended (optional). It is recommended to store printed ScanKeys in a zip bag to decelerate the deterioration, to maintain performance and to prolong lifetime.



4.

Remove the required ScanKey from the frame and its supports prior to use.

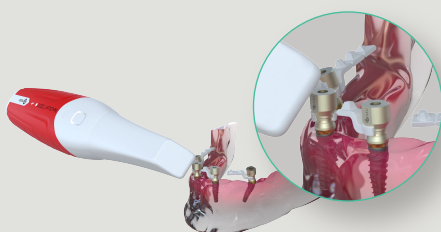
NOTE: The frame surrounding the ScanKey serves as a holder when the ScanKey is not in use.



5.

Snap on the printed ScanKey in position on the ScanBody.

NOTE: The ScanKey can be adjusted in length by removing one or two sections to accommodate different clinical scenarios.



6.

Once the ScanKeys are attached to the ScanBody, with the chosen implant positions providing reference points for creating landmarks, the scanning process can begin.

Scan Body Ti Neoss® and ScanKey Kit

Art. no.	Description
31451	Scan Body Ti Neoss® NP – 1 pc
31452	Scan Body Ti Neoss® SP – 1 pc
31453	Scan Body Ti Neoss® Access – 1 pc
31458	Scan Body Ti Neoss® Multi-Unit – 1 pc
31459	Scan Body Ti Neoss® NP – 5 pcs
31460	Scan Body Ti Neoss® SP – 5 pcs
31461	Scan Body Ti Neoss® Access – 5 pcs
31462	Scan Body Ti Neoss® Multi-Unit – 5 pcs

ScanKey Kit
The ScanKey Kit is compatible with the Scan Body 31452, 31453 and 31458.

ScanKey Kit – NP
The ScanKey Kit – NP is compatible with the Scan Body 31451.

The ScanKey Kits are available as STL files for local printing.
Download the ScanKey at neoss.com.



Scan Body Ti Neoss® NP



Scan Body Ti Neoss® SP



Scan Body Ti Neoss® Access



Scan Body Ti Neoss® Multi-Unit



ScanKey Kit